

Gear Up for Reading! Log Sheet

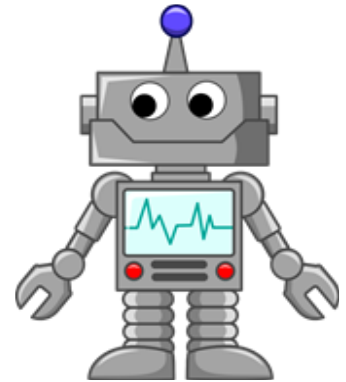
Student Name: _____

Teacher: _____

Parent/Teacher Signature: _____

15 min	15 min	15 min	15 min	1 hour
15 min	15 min	15 min	15 min	2 hours
15 min	15 min	15 min	15 min	3 hours
15 min	15 min	15 min	15 min	4 hours
15 min	15 min	15 min	15 min	5 hours

(5 hours of reading = 1 completed 5-hr grid)



- Check off or color in one block for every 15 minutes read.
- After at least 5 hours of reading, turn in your log sheet to your teacher (be sure to turn in your sheet by each collection day. We will only track reading each month in blocks of 5 hrs. Max hours for the year = 150 hours)
- **Log sheets will be collected on: 11/1, 12/6, 1/3, 2/7, 3/14, 4/11, and 5/9**
- Prizes are awarded for completing 5, 15, 25, and 35 hrs. **Each additional 5-hrs completed (up to a max of 150 hrs. total) will earn you a chance to win a raffle prize at the end of the year Books and Beyond Assembly.**
- Gold medals are given to readers who complete 35 hrs. (average of 5 hrs./month) of reading by May 9, 2018.

For our avid readers, keep logging!

The more completed 5-hr grids you turn in, the more chances you will earn for raffle prizes at the end of the year.

15 min	15 min	15 min	15 min
15 min	15 min	15 min	15 min
15 min	15 min	15 min	15 min
15 min	15 min	15 min	15 min
15 min	15 min	15 min	15 min

15 min	15 min	15 min	15 min
15 min	15 min	15 min	15 min
15 min	15 min	15 min	15 min
15 min	15 min	15 min	15 min
15 min	15 min	15 min	15 min

15 min	15 min	15 min	15 min
15 min	15 min	15 min	15 min
15 min	15 min	15 min	15 min
15 min	15 min	15 min	15 min
15 min	15 min	15 min	15 min

15 min	15 min	15 min	15 min
15 min	15 min	15 min	15 min
15 min	15 min	15 min	15 min
15 min	15 min	15 min	15 min
15 min	15 min	15 min	15 min